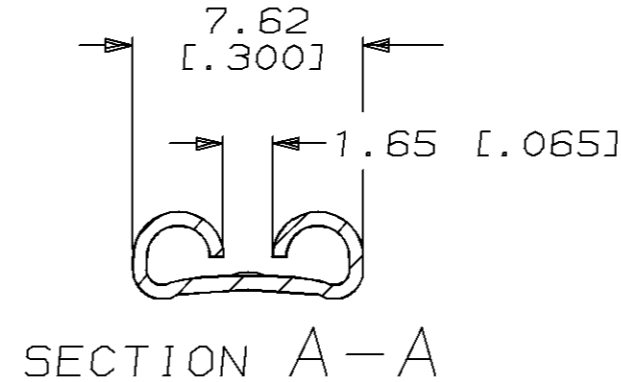
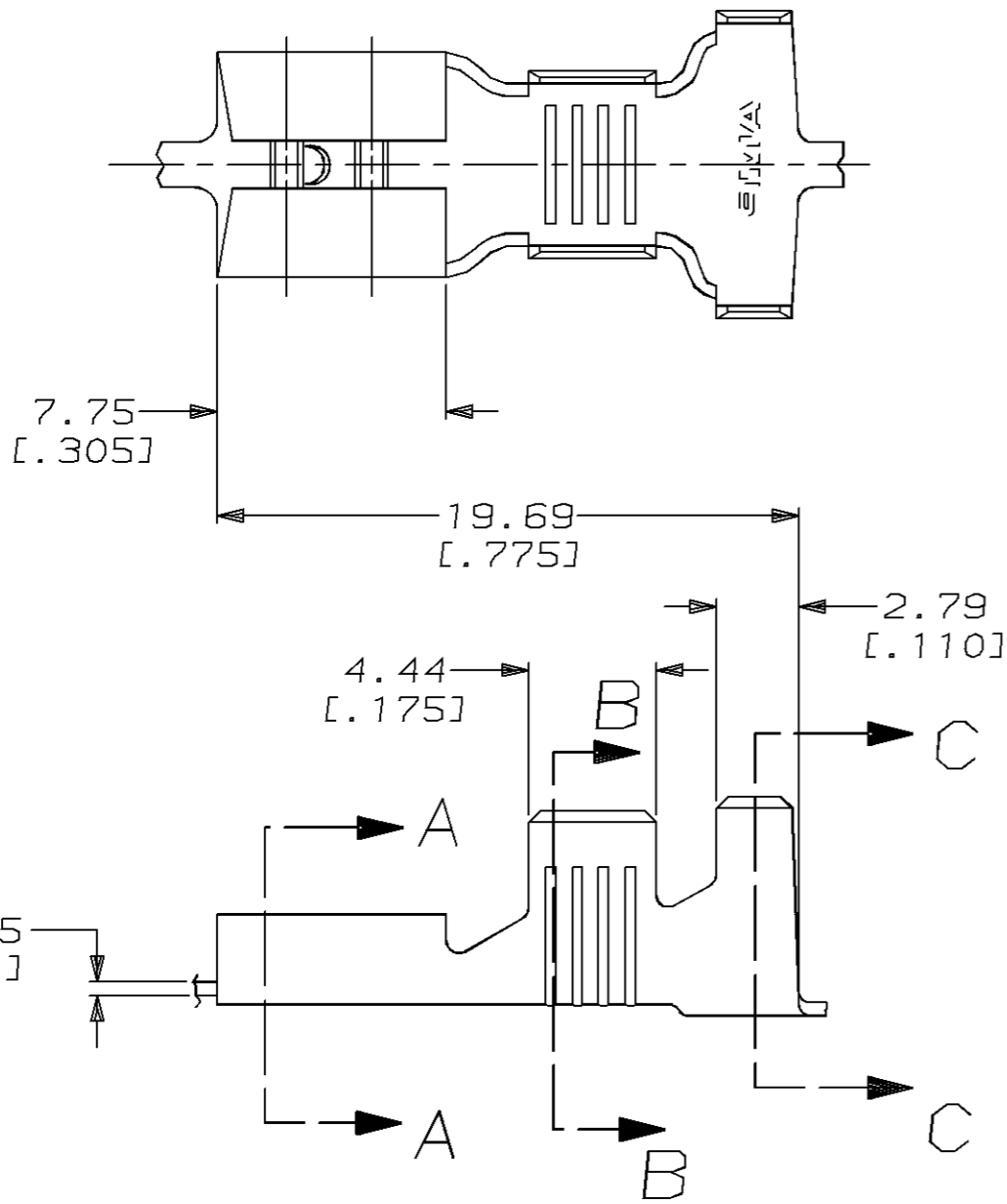


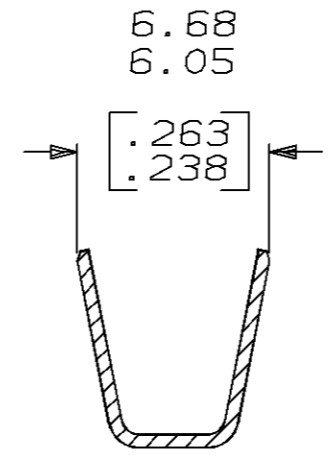
THIS DRAWING IS UNPUBLISHED. RELEASED FOR PUBLICATION, 19  
 © COPYRIGHT 19 BY AMP INCORPORATED. ALL INTERNATIONAL RIGHTS RESERVED.

LOC	DIST	P	F	REVISIONS				
				ZONE	LTR	DESCRIPTION	DATE	APPD
AF	50				F	REDRAWN PER 0710-0129-95	3/15/95	JR/PD

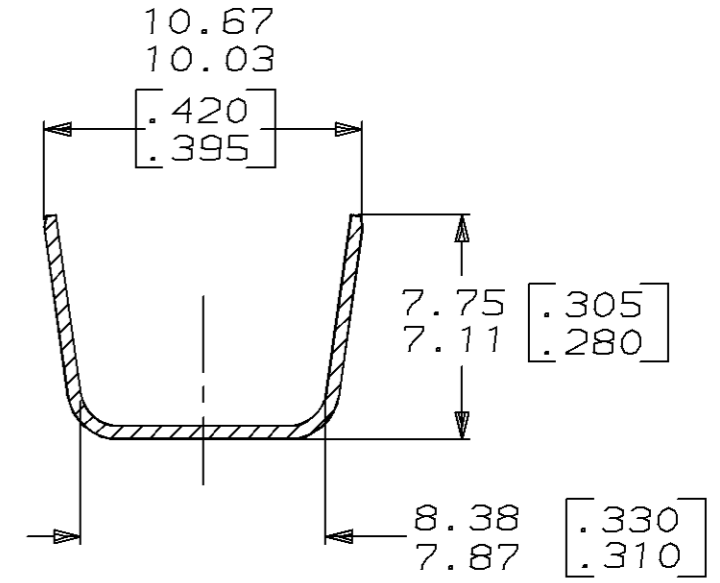
1 CONTINUOUS STRIP ON REELS.



SECTION A-A



SECTION B-B



SECTION C-C

TIN	[.230-.280 OR (2) .160] 5.84-7.11 OR (2) 4.06	[#10-#8] OR (2) (#12's)	0.813±0.025 [.032±.001]	62998-2
FINISH	INSULATION RANGE	WIRE SIZE	MATING TAB THICKNESS	PART NO
DO NOT SCALE PRINT. UNLESS SPECIFIED DIMENSIONS IN mm [INCHES] TOLERANCES ON: 2 PLC DEC ± 0.38 [.015] 3 PLC DEC ± - ANGLES ± -	MATERIAL H04 BRASS	FINISH SEE TABLE	DR 3/15/95 JR RUTH CHK 3/15/95 MS FEHER APPD 3/15/95 P DESANTIS APPD 3/15/95 R REINER PRODUCT SPEC - APPLICATION SPEC 114-2036 WEIGHT -	AMP AMP Incorporated Harrisburg, PA 17105-3608 NAME RECEPTACLE, FASTON, 6.35 [.250] SERIES SIZE B CAGE CODE 00779 DRAWING NO C-62998 SCALE 4:1 SHEET 1 OF 1

THIS DRAWING IS A CONTROLLED DOCUMENT FOR AMP INCORPORATED. IT IS SUBJECT TO CHANGE AND THE CONTROLLING ENGINEERING ORGANIZATION SHOULD BE CONTACTED FOR THE LATEST REVISION.